

IT IS NOT JUST
ANOTHER RESORT.
IT IS THE ALGARVE
AT ITS BEST.



WELCOME TO EPIC SANA ALGARVE

The EPIC SANA Algarve, located in Falésia Beach, is surrounded by 8 hectares of pine forest and green areas.

LEISURE AND ENTERTAINMENT

*EVERYTHING TO GIVE YOU
AN EPIC ACCOMODATION*

The excellent location at Falésia Beach, in Albufeira, along with the harmony of the surrounding green spaces make the EPIC SANA Algarve Hotel perfect for unique moments of leisure, romance or well-being.

If you want to enjoy a truly memorable experience in the Algarve, EPIC SANA Algarve Hotel is the starting point. We are waiting for you!



- 3 Outdoor swimming pools for adults
- 2 Children's outdoor pools
- Heated indoor pool
- Poolside bar service
- Garage and parking
- Little Stars Kid's Club with Playground (seasonal)
- Multi-sports field (Tennis & Volleyball)
- Car rental
- 24-hour Medical Assistance (on request)
- Laundry / Dry Cleaning
- Room Service 24h
- Free Wi-Fi

**Services
& Hotel Facilities_**



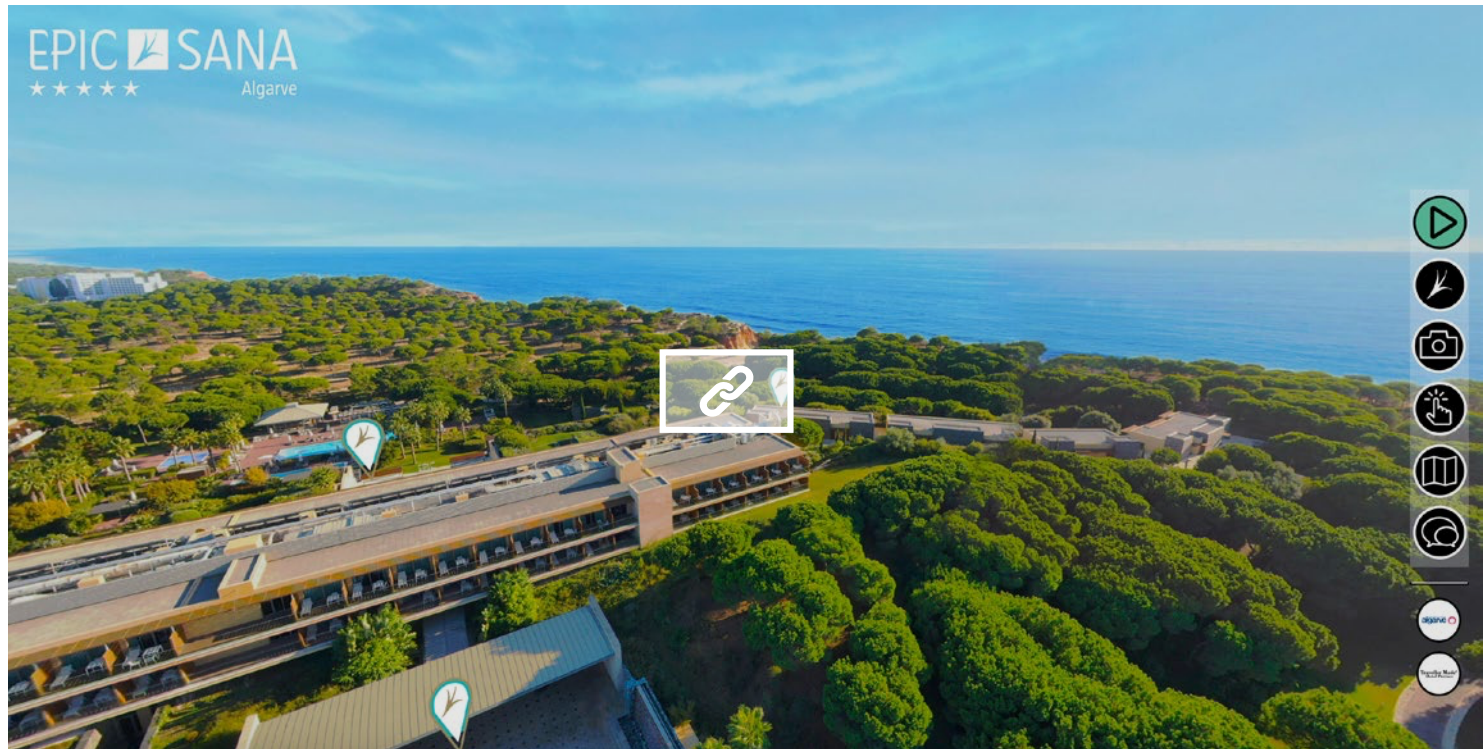
_ LOBBY



_ RECEPTION



_ VIRTUAL TOUR



PRIME LOCATION

*TRUE LUXURY IN A LUXURIANT PINE FOREST,
WITH DIRECT ACCESS TO THE BEACH*

The prime location allows a direct, quick and convenient access to the beach. The wide wooded and gardened areas invite you for a walk throughout the different leisure areas available in the resort, always with the cliff as a backdrop.

_TEMPERATURE

 SPRING | 26°C ▲▼ 10°C

 SUMMER | 30°C ▲▼ 17°C

 AUTUMN | 24°C ▲▼ 9°C

 WINTER | 18°C ▲▼ 7°C

_AERIAL VIEW



Golf
Casino
Historical Villages
Natural Parks
Walking Trails
Safaris through the Algarvian Mountains
Water Sports
Horse riding
Boat trips (caves, dolphins)
Themed parks
• Zoomarine
• Aqua Show
• Aqualand
• Lagos Zoo

Albufeira (centre): 7km | Vilamoura: 7km

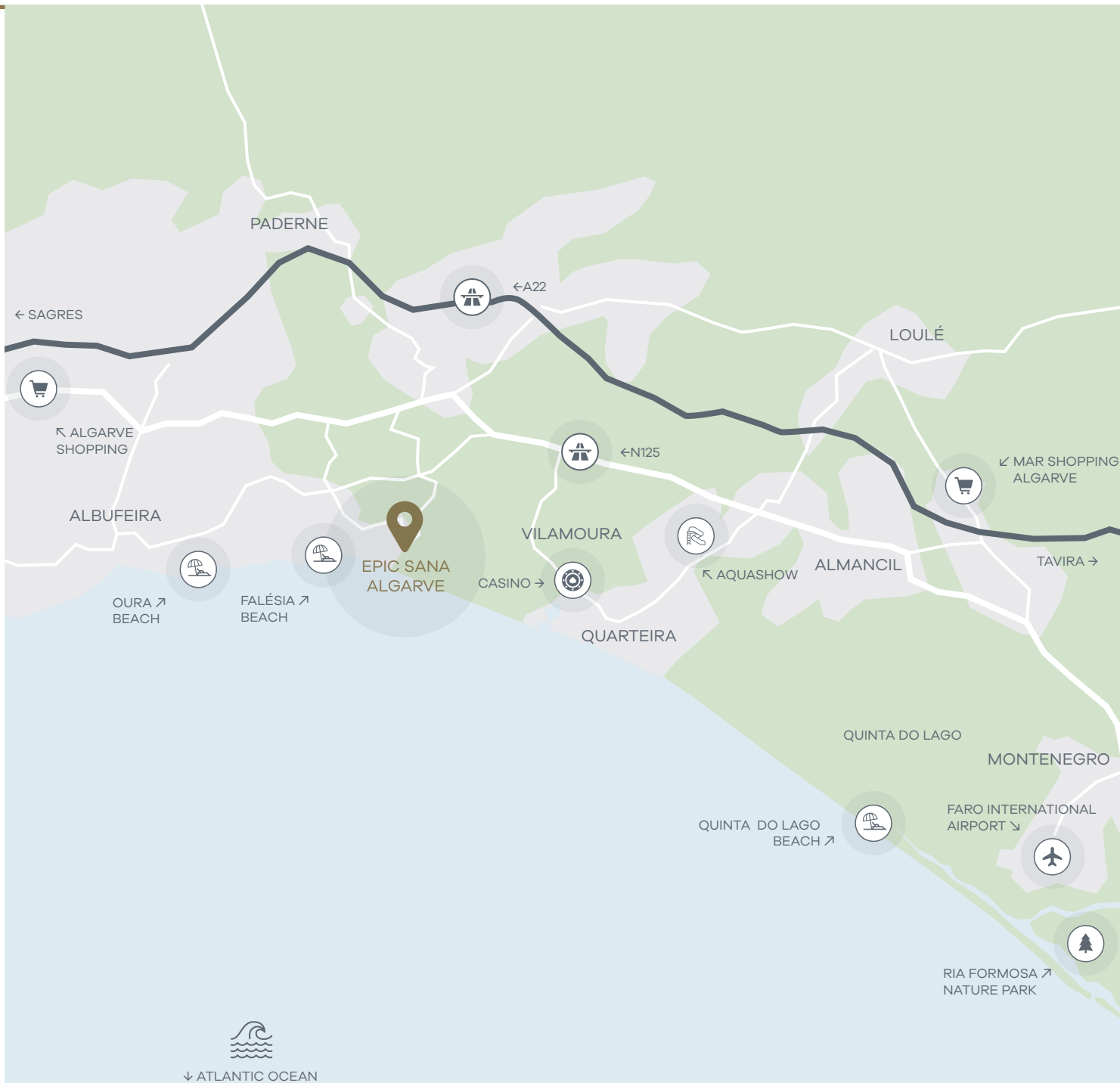
Faro International Airport: 37 km

Lisbon International Airport: 250 km

Surrounding areas _

EPIC SANA ALGARVE ON THE MAP

IMPORTANT REFERENCE POINTS
ON THE ALGARVIAN COASTLINE



RESORT MAP

8 HECTARES OF PINE FOREST
BY THE ATLANTIC OCEAN



- | | | | | | |
|--|-----------------------|--|-----------------------|--|---------------|
| | Indoor parking access | | Parking | | Spa & Fitness |
| | Access to the beach | | Children's playground | | Love tree |
| | Bar | | Swimming pool | | Kids Club |
| | Multi-sports field | | Restaurant | | |

ACCOMMODATION

A VERY SPECIAL COMFORT

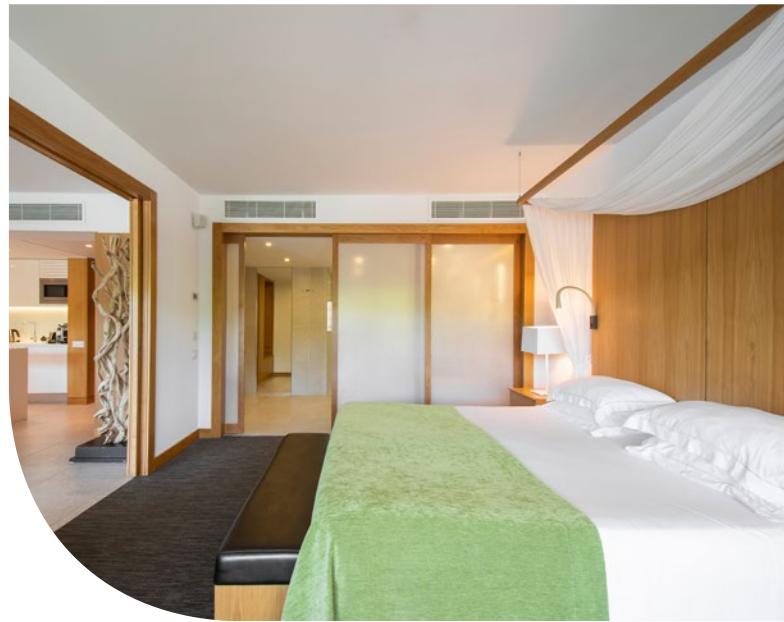
EPIC SANA Algarve provides a total of 229 magnificent accommodation units, designed to exceed the expectations of its clients.

160 / DELUXE ROOMS (32 -64sqm)

2 / OCEAN DELUXE SUITES (64sqm)

24 / GARDEN DELUXE SUITES (73 - 175sqm)

43 / RESORT SUITES (38 - 79sqm)



- 40-inch LED screen
- 40 digital channels and Video on demand (Vod)
- Free Wi-Fi internet access
- Personalised sound system via cable or Bluetooth
- Direct dial telephone with voice mail
- Air conditioning
- Minibar
- Nespresso coffee machine
- Iron and ironing board
- Free safe with space for laptop
- Hair dryer
- Make-up mirror
- Bathrobes and slippers
- Aromatherapy Amenities
- Press Reader

Services & Facilities_

_SO SUITE



_DELUXE DOUBLE ROOM



_GARDEN SUITES



ABYAD RESTAURANT

*THE MOST EXQUISITE NATIONAL
AND INTERNATIONAL CUISINE*

At Abyad restaurant you will find a familiar and friendly atmosphere. Based on international cuisine combined with the best of regional ingredients, Abyad presents a varied gastronomical offer, which pleases a wide variety of tastes. Buffet à la carte or table d'hôte depending on the occupancy of the Hotel.

Meals are served with daily preparation by our chefs.



_ ABYAD RESTAURANT



_ ABYAD RESTAURANT



AL QUIMIA RESTAURANT

*THE MOST EXQUISITE
FINE DINING EXPERIENCE*

In the re-invented Al Quimia restaurant you will find a sophisticated and pleasant atmosphere, with attention to every detail and with a focus on the customer, without the strict limitations imposed by a traditional fine dining environment.

This restaurant is something unique in the resort: a superb view over the gardens, a spacious terrace, and an exceptional gastronomic offer where the best Portuguese wines promise to maximise the experience.

Booking required. Adults only.



_ AL QUIMIA RESTAURANT

_ AL QUIMIA RESTAURANT



BLUUM BAR

A PLACE TO REMEMBER

Designed by Miguel Cândia, BLUUM Bar breaks with the classic and joins the line of the trendiest and most innovative bars in Europe.

Here you will find a wide selection of cocktails with a contemporary twist as well as a wide selection of spirits.

Bluum Bar also offers light meals from 6pm to 11pm, for those who wish to dine in a trendy atmosphere.



_ BLUUM BAR



_ BLUUM BAR



LIMA RESTAURANT / BAR

*CREATIVE, MODERN
AND INSPIRED BY ITALIAN PRODUCTS*

Lima is the recommended place for family moments. It is part of the Resort Suites, next to the Kids Club and the swimming pools. During Summer, it provides a delicious brunch for guests lodged in those suites.

In the evenings, enjoy a typically Italian atmosphere, starting from the music, through the wine selection and the decoration of the space and the tables. The menu of this seasonal restaurant was created so that you can enjoy the true Italian essence with your family and friends.

Booking required | Seasonal restaurant



_ LIMA RESTAURANT



_ LIMA RESTAURANT



OPEN DECK RESTAURANT / BAR

PORTUGUESE GASTRONOMY AT ITS BEST

Located in the swimming pool area, in the centre of the resort, the Open Deck is a very casual spot with a contemporary decoration.

During the day it is great for a light meal or a refreshing drink. The dinner menu is inspired in the traditional and typical Portuguese cuisine.

Seasonal restaurant: closed during the winter season.



_ OPEN DECK RESTAURANT/BAR



_ OPEN DECK RESTAURANT/BAR



UDDO

JAPANESE CONTEMPORARY STYLE MODERN IZAKAYA

A restaurant with an elegant and casual atmosphere and a decor inspired by Japanese culture and wood. UDDO (wood in Japanese) presents the flavours and the ancient tradition of the best gastronomy of Izakaya.

The menu of this seasonal restaurant, developed by Dhiego Silva (Head Chef & Sushiman), invites you for a memorable experience and is characterized by the authentic flavours of Japan that respect the traditions of the past, with a selection of signature dishes to enjoy the freshness of the Algarve products, using the techniques of Japanese cuisine.

Seasonal restaurant



_ UDDO RESTAURANT

_ UDDO RESTAURANT



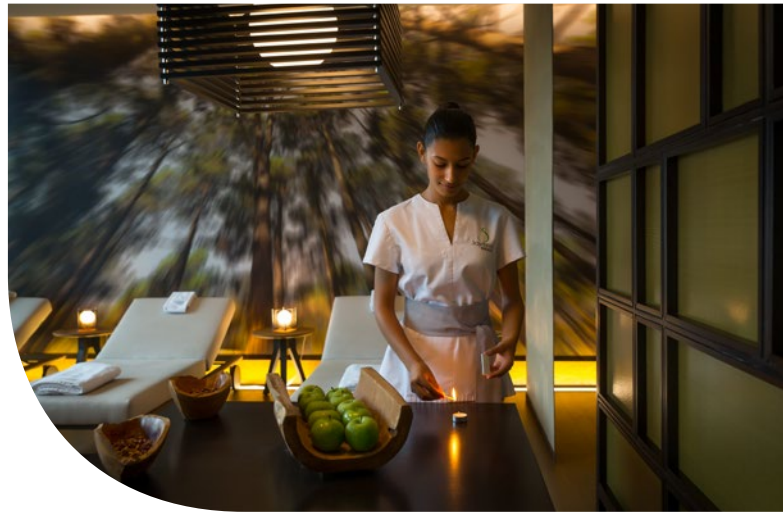
SAYANNA WELLNESS & SPA

*A HAVEN OF TRANQUILLITY
FOR BODY AND MIND*

At EPIC SANA Algarve, SAYANNA is the perfect place to relax and take care of body and mind, with a SPA that gives meaning to the concept "Health through Water".

A place where you can enjoy a massage, relax, revitalize and rejuvenate your body and also to enjoy a dynamic vitality pool with water cascades, sauna, steam room and ice fountain.

_ SAYANNA



- 4 Treatment rooms
- 1 Couple VIP Suite
- 1 Couple VIP massage pavilion with private garden and jacuzzi
- 1 exterior massage tent
- Vichy Shower
- Sauna
- Steam room
- Relaxing pool
- Gym

Wellness Programmes:

- SAYANNA Reshape Retreat (7 nights)
- SAYANNA Body & Soul Detox Retreat (7 nights)
- SAYANNA De-Stress Retreat (7 nights)
- SAYANNA Stressless Mindfulness Retreat
- SAYANNA Yoga Retreat (5 nights)
- SAYANNA Yoga Escape
- SAYANNA Active Escape
- SAYANNA Retreat à la Carte

**Available
Services_**

MEETING ROOMS

*MEETINGS, CONFERENCES AND EVENTS
GET A NEW LIFE*

EPIC SANA Algarve has a Conference Centre with an area of 1.848sqm, natural light and more than 1000sqm of outdoor spaces.

The rooms are characterized by their flexibility in size and layout, allowing to host various types of events.

The Atlantic room is a 1,029sqm meeting and banqueting room. It is divideable up to 3 rooms with areas between 245sqm each and 755sqm, with a height of 4.20m.

_ CONFERENCE CENTRE – FACADE



_ GARDEN VIEW ROOM



- Integrated Audiovisual Equipment
- Sound / Light Control
- Access for people with reduced mobility
- Natural Light
- Air conditioning in rooms
- Wi-Fi Access
- Electronic Blackouts

Features_

A hand is shown reaching out from the right side of the frame towards a stylized globe on the left. The globe is composed of a wireframe mesh of white lines. The background is a dark blue gradient with a network of white lines and dots, suggesting a digital or data environment. The overall aesthetic is futuristic and technological.

SAN.IA

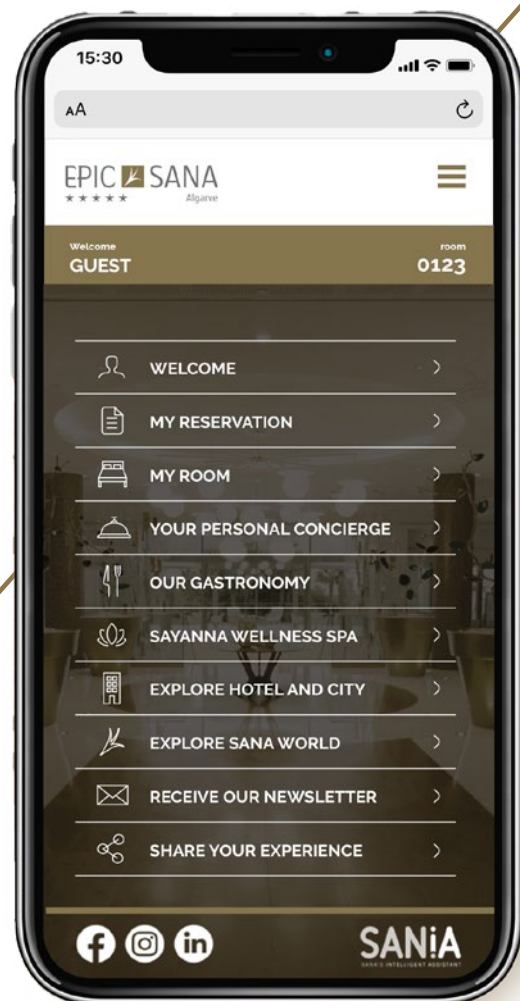
WELCOME
TO THE FUTURE

SANiA
SANA'S INTELLIGENT ASSISTANT

YOUR HOTEL IN THE PALM OF YOUR HAND

Hello!
I am SAN.IA, your Intelligent Assistant at SANA Hotels.
All of the Hotel services available at the palm of your hand.
Welcome to EPIC SANA Algarve.

Discover how fast and easy it is to access all the hotel's services from your mobile device. Through our web app, you can make your wishes come true, make special requests and have access to information. All to maximize your time to enjoy every moment of your stay even more.



Everything SAN.IA
can do for you_

- Manage your Reservation
- Room Service
- Restaurant Menus and reservations
- Services related to your stay
- Check availability and scheduling at SAYANNA Wellness & SPA
- Extra services
- Information about SANA World

The background is a vertical composition. The top left shows a curved horizon of Earth with a thin blue atmosphere. The rest of the image is a dark field filled with a dense cluster of bright, golden-yellow stars, resembling a galaxy or a star-forming region. The text is overlaid on the left side of this background.

SANA WORLD

A WORLD
OF UNIQUE
SENSATIONS

SANA HOTELS

THE PERFECT WORLD TO EXPERIENCE
UNIQUE SENSATIONS

SANA Hotels are perfect for those who like to experience unique sensations. More than a Hotel chain, it is a group of exclusive concepts, a multisensory experience where each hotel unit has its own personality, distinct nuances, sensations and tones.

We provide unforgettable moments, always guaranteeing comfort and quality, exceeding your expectations.

Explore all the
other properties
that are part of
the SANA world_



SANA IN THE WORLD

EVER-EXPANDING



* Coming soon

SANA world is continually expanding, signing unique hotels, each one with its own personality, but all always focused on providing excellent service. Discover all our properties and upcoming projects, at sanahotels.com.

TALK TO US

EPIC SANA Algarve

Pinhal do Concelho, Praia da Falésia
8200-593 Albufeira - Algarve

T +351 289 104 300

E info.algarve@epic.sanahotels.com

ALGARVE.EPIC.SANAHOTELS.COM

